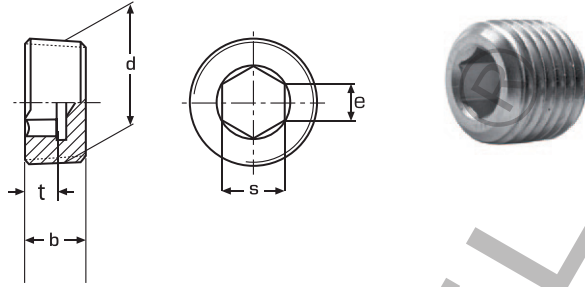



DIN 906



Śruba zamykająca
z sześciokątem wewnętrznym
A2 / A4

d	b	e	s	t	
M 8 x 1	8	4,6	4	4,0	50
M 10 x 1	8	5,7	5	4,0	50
M 12 x 1,5	10	6,9	6	5,0	50
M 14 x 1,5	10	8,0	7	5,0	50
M 16 x 1,5	10	9,2	8	5,0	50
M 18 x 1,5	10	9,2	8	5,0	50
M 20 x 1,5	10	11,4	10	5,0	25
M 22 x 1,5	10	11,4	10	5,0	25
M 24 x 1,5	12	13,7	12	6,0	25
M 26 x 1,5	12	13,7	12	6,0	10
M 27 x 2	12	13,7	12	6,0	10
M 30 x 1,5	12	19,4	17	6,0	10
M 30 x 2	12	19,4	17	6,0	10
M 36 x 1,5	15	21,7	19	7,5	10
R 1/8"	8	5,7	5	4,0	50
R 1/4"	10	8,0	7	5,0	50
R 3/8"	10	9,2	8	5,0	50
R 1/2"	10	11,4	10	5,0	25
R 3/4"	12	13,7	12	6,0	25
R 1"	12	19,4	17	6,0	10
R 1 1/4"	18	25,2	22	11,5	5
R 1 1/2"	20	27,4	24	11,5	5
R 2"	22	35,6	32		5