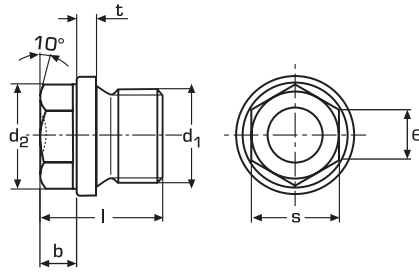



# DIN 910



Śruba zamykająca  
z łbem sześciokątnym zewnętrznym  
**A2 / A4**

d1	d2	l	b	t	e	s	
M 10 x 1	14	17	6	3	10,89	10	50
M 12 x 1,5	17	21	6	3	14,20	13	50
M 14 x 1,5	19	21	6	3	14,20	13	50
M 16 x 1,5	21	21	6	3	18,72	17	50
M 18 x 1,5	23	24	8	4	18,72	17	50
M 20 x 1,5	25	26	8	4	20,88	19	25
M 22 x 1,5	27	26	8	4	20,88	19	25
M 24 x 1,5	29	27	9	4	23,91	22	25
M 26 x 1,5	31	30	10	4	26,17	24	10
M 27 x 2	32	30	10	4	26,17	24	10
M 30 x 1,5	36	30	10	4	26,17	24	10
M 30 x 2	36	30	10	4	26,17	24	5
R 1/8"	14	17	6	3	10,89	10	50
R 1/4"	18	21	6	3	14,20	13	50
R 3/8"	22	21	6	3	18,72	17	50
R 1/2"	26	26	8	4	20,88	19	25
R 5/8"	28	26	8	4	21,90	19	25
R 3/4"	32	30	10	4	26,17	24	25
R 1"	39	32	11	5	29,56	27	10
R 1 1/8"	44	32	11	5	29,56	27	5
R 1 1/4"	49	33	12	5	32,95	30	5
R 1 1/2"	55	33	12	5	32,95	30	5
R 1 3/4"	62	40	15	5	39,55	36	5
R 2"	68	40	15	5	39,55	36	5