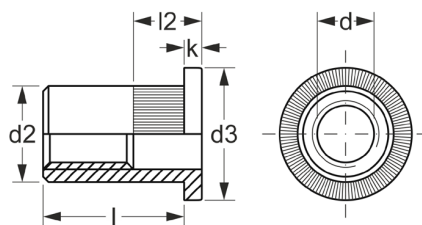



1-1087

Nitonakrętka walcowa
 radełkowana na tulei
A2



d	l	d2	d3	l2	k	zakres zaciskania	
M 3	10,0	4,9	7	4,7	0,9	0,5-2,0	250
	4	10,0	5,9	9	5,5	1,0	0,3-3,0
5	11,5	5,9	9	7,5	1,0	3,1-4,0	250
	12,0	6,9	10	6,0	1,0	0,3-3,0	250
6	15,0	6,9	10	8,0	1,0	3,1-4,0	250
	14,5	8,9	13	8,0	1,5	0,5-3,0	250
8	16,0	8,9	13	10,0	1,5	3,1-4,5	250
	16,0	10,9	16	8,5	1,5	0,5-3,0	250
10	18,5	10,9	16	11,0	1,5	3,1-5,5	250
	17,0	12,9	19	10,0	2,0	0,5-3,0	250
12	22,0	12,9	19	13,0	2,0	3,1-6,0	250
	23,0	15,9	23	12,0	2,0	1,0-4,0	250