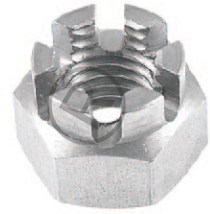
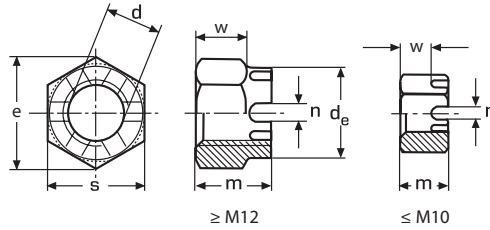



DIN 935

EN 27035
ISO 7035
PN 82148



Nakrętka koronowa
A2 / A4

d	m	n	de	w	e	s	
M 5	6,0	1,4	-	4,0	8,79	8	100
M 6	7,5	2,0	-	5,0	11,05	10	100
M 8	9,5	2,5	-	6,5	14,38	13	100
M 10	12,0	2,8	-	8,0	17,77	16	50
M 12	15,0	3,5	17	10,0	20,03	18	50
M 14	16,0	3,5	19	11,0	23,35	21	50
M 16	19,0	4,5	22	13,0	26,75	24	50
M 18	21,0	4,5	25	15,0	29,56	27	25
M 20	22,0	4,5	28	16,0	32,95	30	25
M 22	26,0	-	-	18,0	35,03	32	25
M 24	27,0	5,5	34	19,0	39,55	36	25
M 27	30,0	5,5	38	22,0	45,20	41	10
M 30	33,0	7,0	42	24,0	50,85	46	10
M 36	38,0	7,0	50	29,0	55,80	55	10