

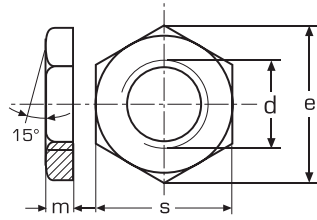
# DIN 431


EN 27435

ISO 7435

Nakrętka rurowa

A2 / A4



d	m	e	s	
G 1/8"	6	20,88	19	100
G 1/4"	6	23,91	22	100
G 3/8"	7	29,56	27	50
G 1/2"	8	35,03	32	50
G 5/8"	8	35,03	32	25
G 3/4"	9	39,55	36	25
G 7/8"	9	45,20	41	10
G 1"	10	50,85	46	10
G 1 1/4"	11	60,79	55	5
G 1 1/2"	12	66,44	60	5
G 2"	13	82,60	75	5