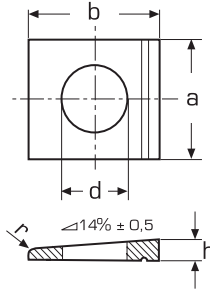



DIN 435

PN 82009



Podkładka klinowa do dwuteownika,
nachylenie 14%

A2 / A4

dla gwintu	d	a	b	h	r	
M 8	9,0	22	22	4,6	1,2	50
M 10	11,0	22	22	4,6	1,2	50
M 12	13,5	26	30	6,2	1,6	25
M 16	17,5	32	36	7,5	2,0	25
M 20	22,0	40	44	9,2	2,4	25
M 22	24,0	44	50	10,0	2,4	10
M 24	26,0	56	56	10,8	2,4	10